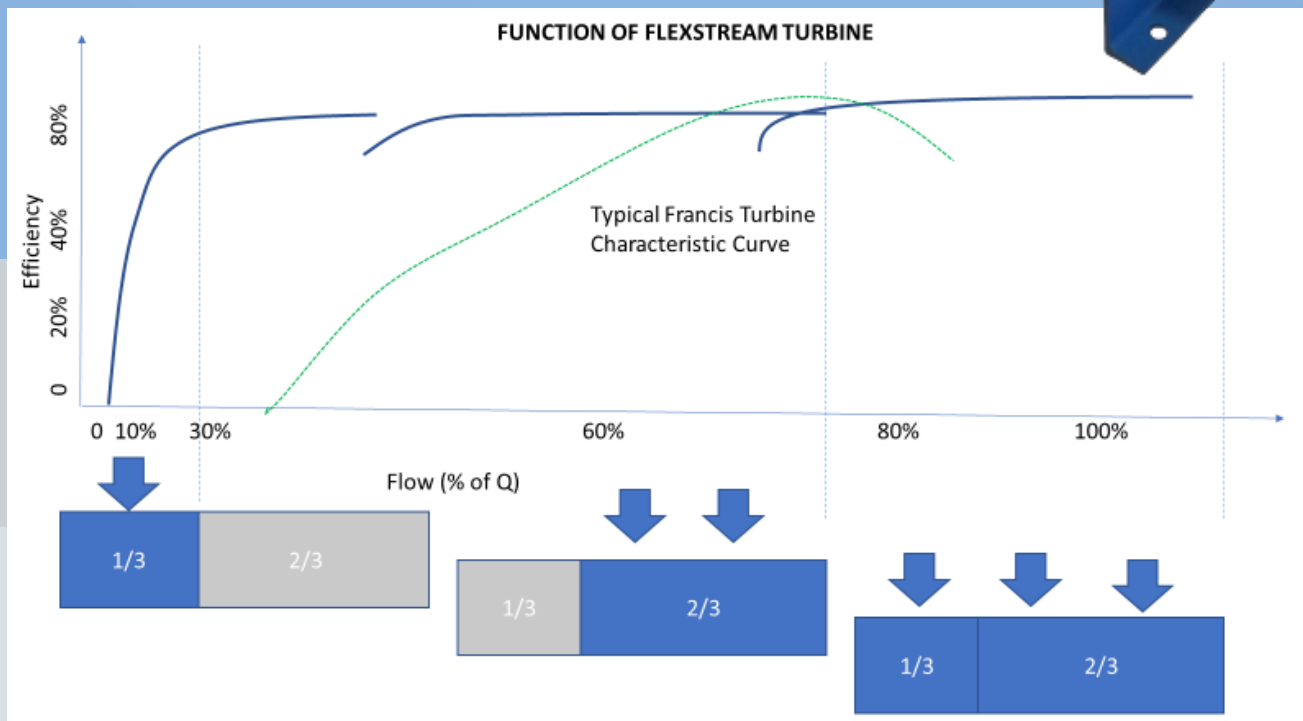
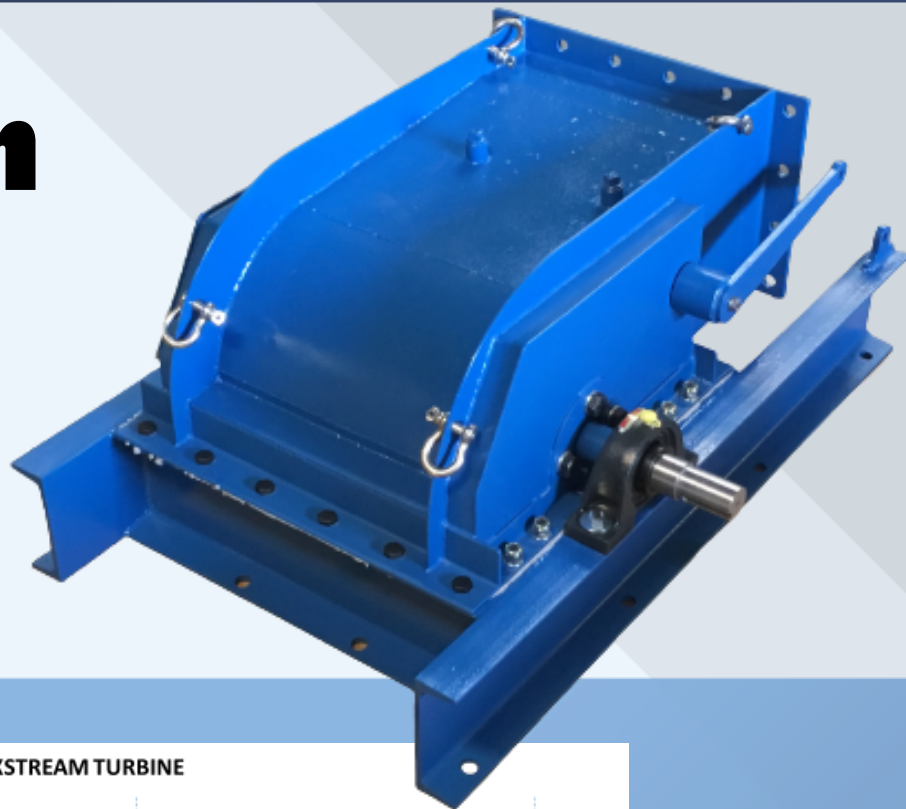




# FlexStream



FlexStream is a flexible, efficient, and tough crossflow turbine that makes it easy to develop small hydro.



The Flexstream turbine is an evolution of a traditional crossflow design. It includes an optimized guide vane and blade geometry to maximize efficiency.



**Inlet Guide Vane**

Engineered inlet vanes improve efficiency and allow for efficient operation at a wide range of flows.

**Guide Vane Governor Arm**

Adjusts based on head and flow measured at control panel.

**Turbine Runner**

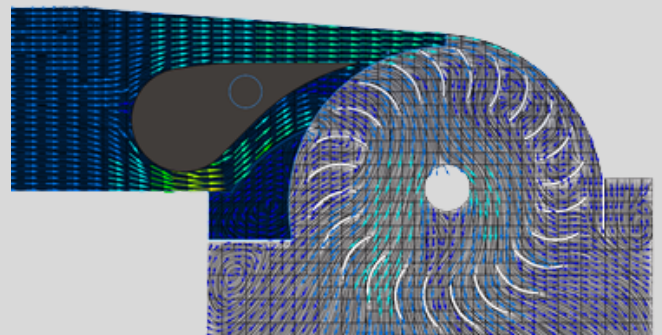
Optimized runner geometry improves overall efficiency

**Pressure Casing**

Ogee contoured pressure casing enhances efficiency by improving both the free stream energy capture and the reaction energy recovery passing through the draft tube

The inlet guidevane on the FlexStream is optimized to provide the best relationship of efficiency and flexibility at off design flows.

CFD Model of the Optimized Guide Vane



Select a model and size range based on flow and our engineers will complete the detailed sizing.

Design Flow (CFS)	5-10	11-20	21-35	36-50	51-75	76-100
<b>2300 G Series</b>	G24	G36	---	--	--	--
<b>2300 N Series</b>			N36	N48	N64	
<b>2300 H Series</b>						H78